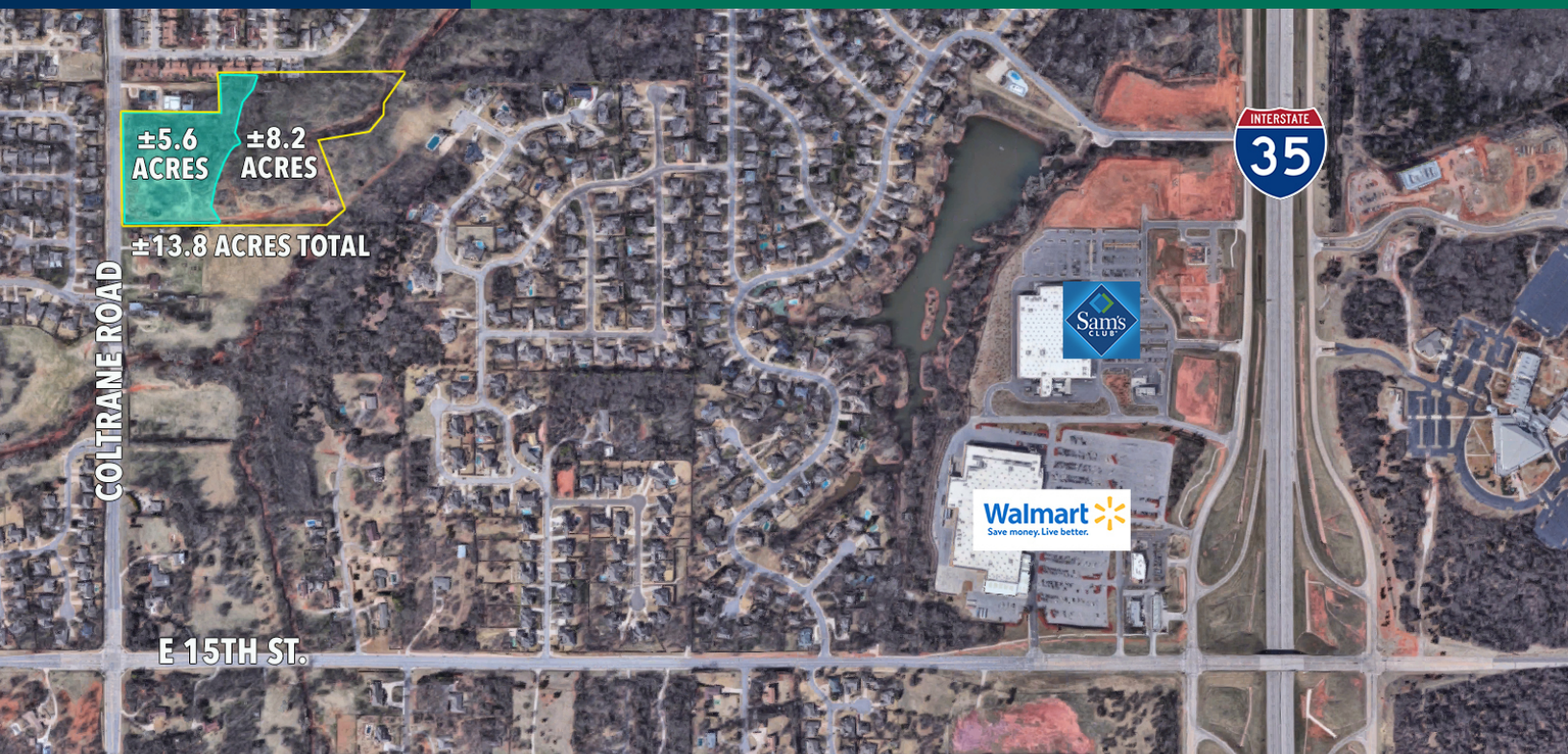


# Development Land For Sale

Coltrane, between 15th and 2nd St. Edmond, OK 73034



## OFFERING SUMMARY

Sale Price: \$999,750

Total Lot Size: ±13.8 Acres

## LOCATION OVERVIEW

Located one mile west of I-35, on the east side of Coltrane Road just north of 15th Street.

## PROPERTY HIGHLIGHTS

- Zoned Residential
- ± 497 feet of frontage on Coltrane
- R189257000 OK County Assessor Account Number
- ±13.8 area total
- ±5.6 acres developed (±8.2 acres in floodplain)
- Easily accessible from I-35

**TOM FIELDS**  
405.239.1205  
tfields@priceedwards.com  
priceedwards.com