

FRANCIS PROFESSIONAL BUILDING

MIDTOWN

1221 N. Francis, Oklahoma City, OK 73106



FRANCIS PROFESSIONAL BUILDING

MIDTOWN

1221 N. Francis, Oklahoma City, OK 73106



PROPERTY HIGHLIGHTS

Sale Price:	\$1,499,900
Price / SF:	\$156.98
Lot Size:	0.39 Acres
NOI:	\$130,366
Building Size:	9,529 SF
Building Class:	A
Market:	Central Business District
Sub Market:	Midtown
Cap Rate:	8.7%

TOTALLY REMODELED & PRIME LOCATION

- Beautifully reconstructed Brownstone with class "A" finishes throughout.
- Access to the first floor is available on three sides, with an exterior elevator on the north side.
- The parking lot on the west side has 9 spaces, with additional overflow available in two adjoining lots to the south.

CONTACT US

DEREK JAMES - Broker, Associate
(405) 239-1206
djames@priceedwards.com

FRANCIS PROFESSIONAL BUILDING

MIDTOWN

1221 N. Francis, Oklahoma City, OK 73106



ADDITIONAL PHOTOS



FRANCIS PROFESSIONAL BUILDING

MIDTOWN



1221 N. Francis, Oklahoma City, OK 73106



DEMOGRAPHICS (5 MILE RADIUS)

Total Population	207,456
Population Density	207,456
Median Age (Male)	33.7
Median Age (Female)	34.3
Total Households	83,057
# of Persons Per Household	2.5
Average Household Income	\$47,369
Average House Value	\$156,395

LOCATED IN THE HEART OF MIDTOWN

With an easy access off I-40 to the south, Classen Blvd. to the west and a short distance to I-235, Francis Professional Building can be reached with ease from all points of the Metro.

CONTACT US

DEREK JAMES - Broker, Associate
(405) 239-1206
djames@priceedwards.com

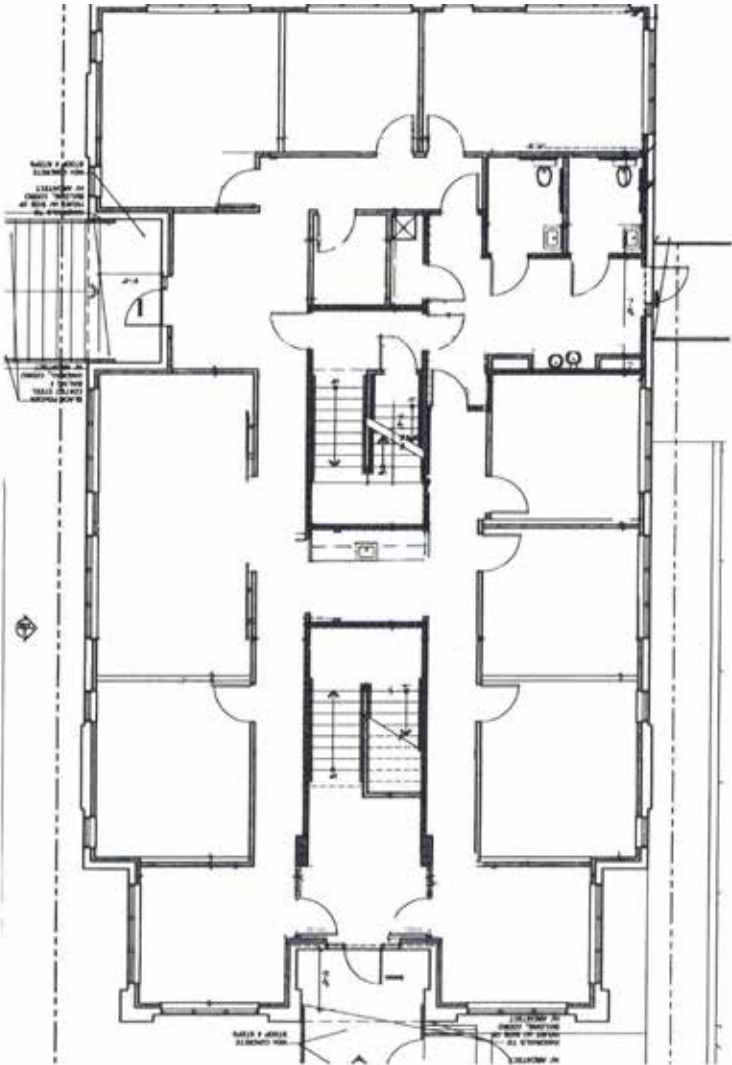
FRANCIS PROFESSIONAL CENTER

MIDTOWN

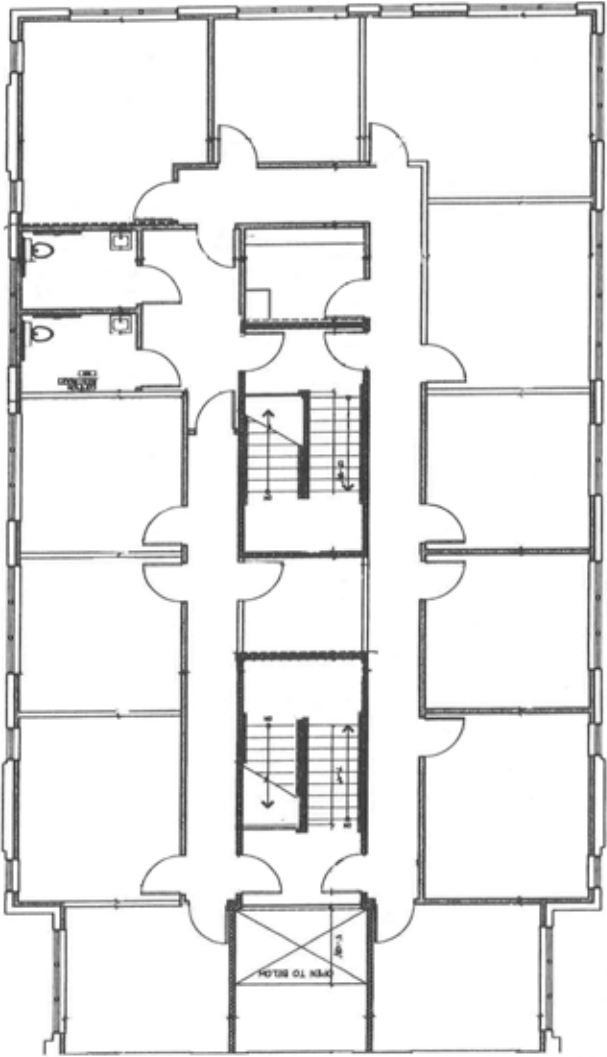
1221 N. Francis, Oklahoma City, OK 73106



FIRST FLOOR



SECOND FLOOR



CONTACT US
DEREK JAMES - Broker, Associate
(405) 239-1206
djames@priceedwards.com