

OFFERING SUMMARY

Sale Price:	\$550,000
Building Size:	2,230 SF
Lot Size:	0.47 Acres
Price / SF:	\$246.64
Year Built:	1980
Zoning:	Commercial
Market:	OKC Metro
Submarket:	Moore

PROPERTY OVERVIEW

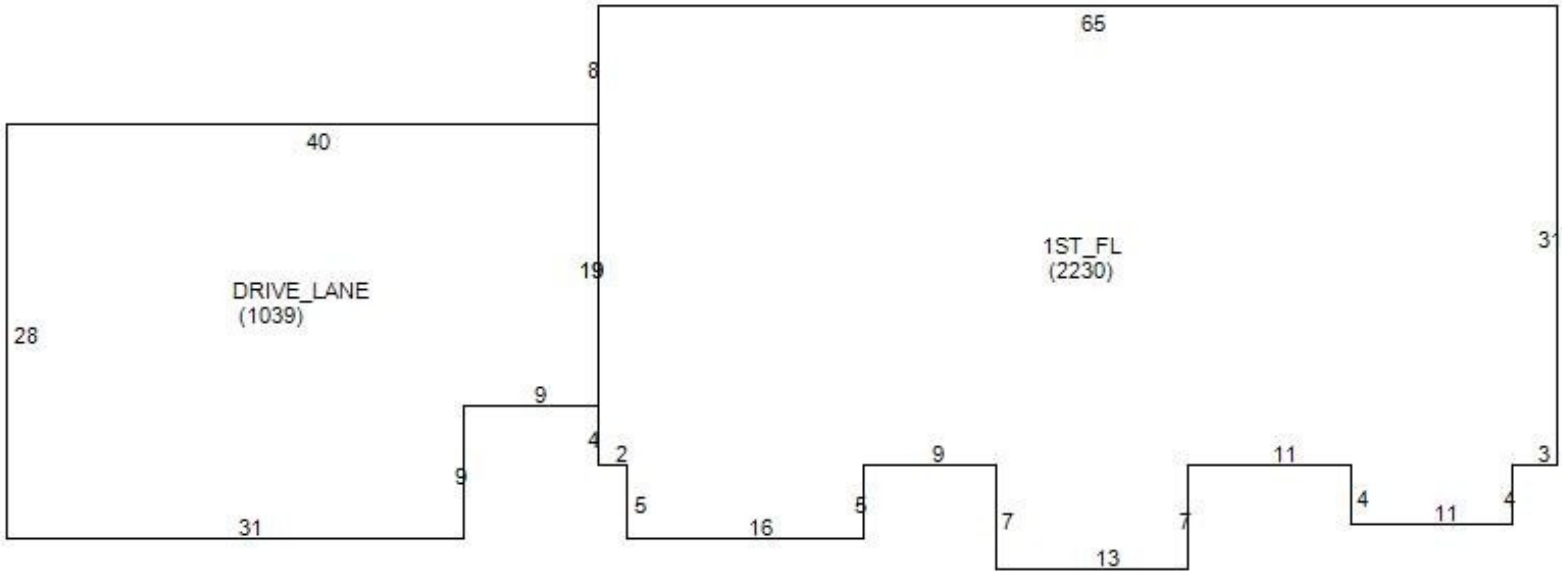
Former bank building with 2,230 square feet of space ideal for banking, retail or office. The property is located between I-35 and N Eastern Avenue east of I-35. The 2,230 square foot building also includes a 3 bay drive thru bank system. The building is in good condition and would be ideal for many different uses.

PROPERTY HIGHLIGHTS

- Bank Facility
- Bank Vault
- Drive-Thru facility
- Great location next to Crest Foods

PAUL RAVENCRAFT
405.239.1220
pravencraft@pricedwards.com
pricedwards.com

GEORGE WILLIAMS, CCIM
405.239.1270
gwilliams@pricedwards.com
pricedwards.com

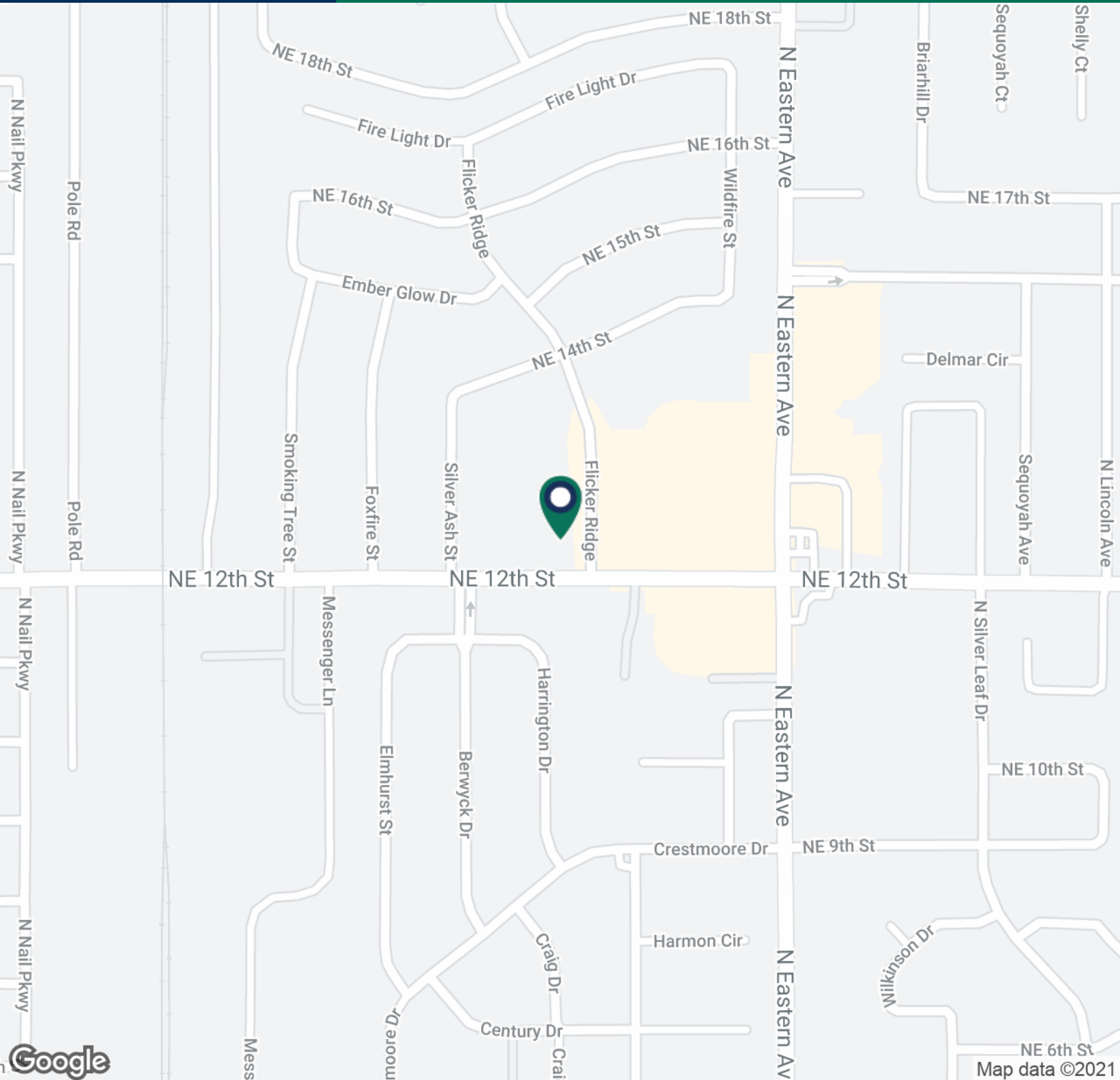


PAUL RAVENCRAFT
405.239.1220
pravencraft@pricedwards.com
pricedwards.com

GEORGE WILLIAMS, CCIM
405.239.1270
gwilliams@pricedwards.com
pricedwards.com

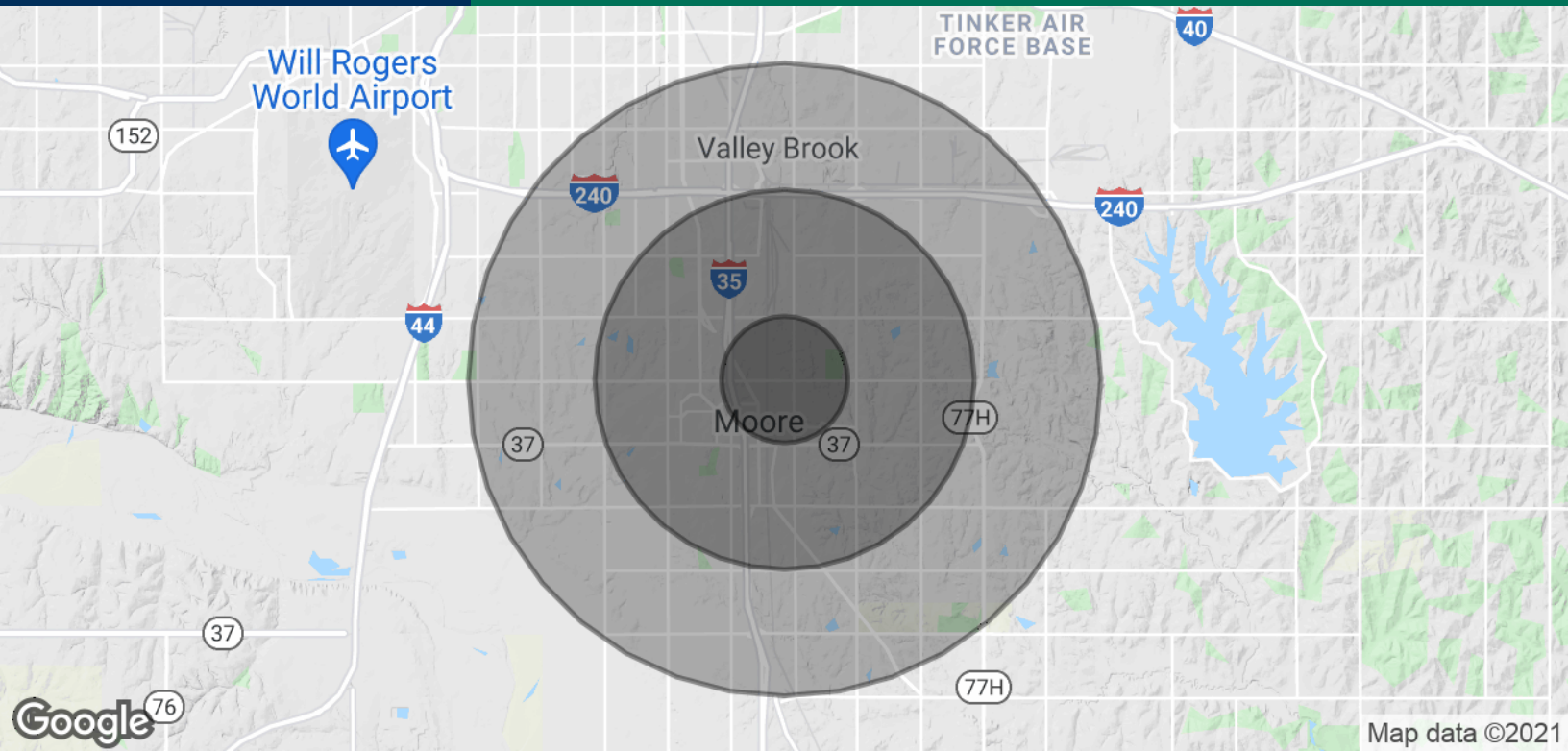
IBC Bank Building Moore, OK

513 NE 12th Street, Moore, OK 73160



PAUL RAVENCRAFT
405.239.1220
pravencraft@pricedwards.com
pricedwards.com

GEORGE WILLIAMS, CCIM
405.239.1270
gwilliams@pricedwards.com
pricedwards.com



POPULATION

	1 MILE	3 MILES	5 MILES
Total Population	9,492	62,337	140,262
Average Age	33.9	33.2	33.3
Average Age (Male)	31.7	32.2	32.4
Average Age (Female)	36.6	34.2	34.0

HOUSEHOLDS & INCOME

	1 MILE	3 MILES	5 MILES
Total Households	3,465	23,499	53,203
# of Persons per HH	2.7	2.7	2.6
Average HH Income	\$59,066	\$61,339	\$60,935
Average House Value	\$134,543	\$131,834	\$135,543

* Demographic data derived from 2010 US Census

PAUL RAVENCRAFT
405.239.1220
pravencraft@priceedwards.com
priceedwards.com

GEORGE WILLIAMS, CCIM
405.239.1270
gwilliams@priceedwards.com
priceedwards.com