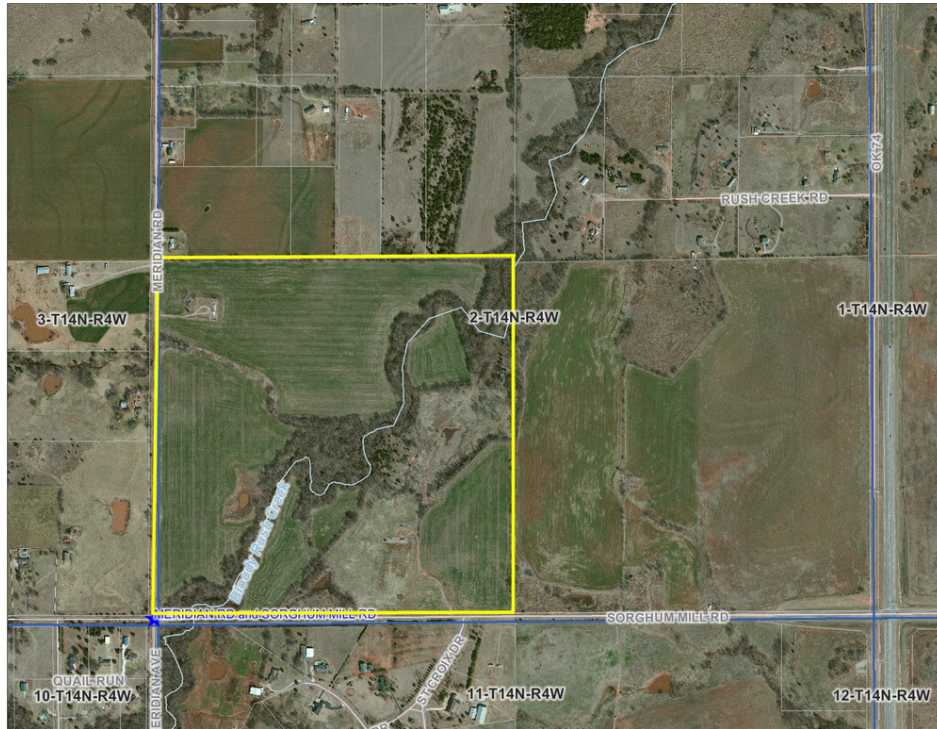


# LAND FOR SALE - 161 ACRES

NE corner of N. Meridian and Sorghum Mill Road Edmond, OK 73025



## LAND SPACE NOW AVAILABLE

**Sale Price:** \$12,000 / acre

**Lot Size:** 161.19 Acres

**APN #:** R257025005

**Cross Streets:** Northwest 234th Street & North Meridian Avenue

## PROPERTY OVERVIEW

Located at the NE corner of N. Meridian and Sorghum Mill Road. Acreage developments in the area. Deer Creek Schools nearby. the site is bisected by Bloody Rush Creek, which offers developers the opportunity to create residential home-sites with green belts and water features. Frontage on both streets offer locations for numerous access points.

## LOCATION OVERVIEW

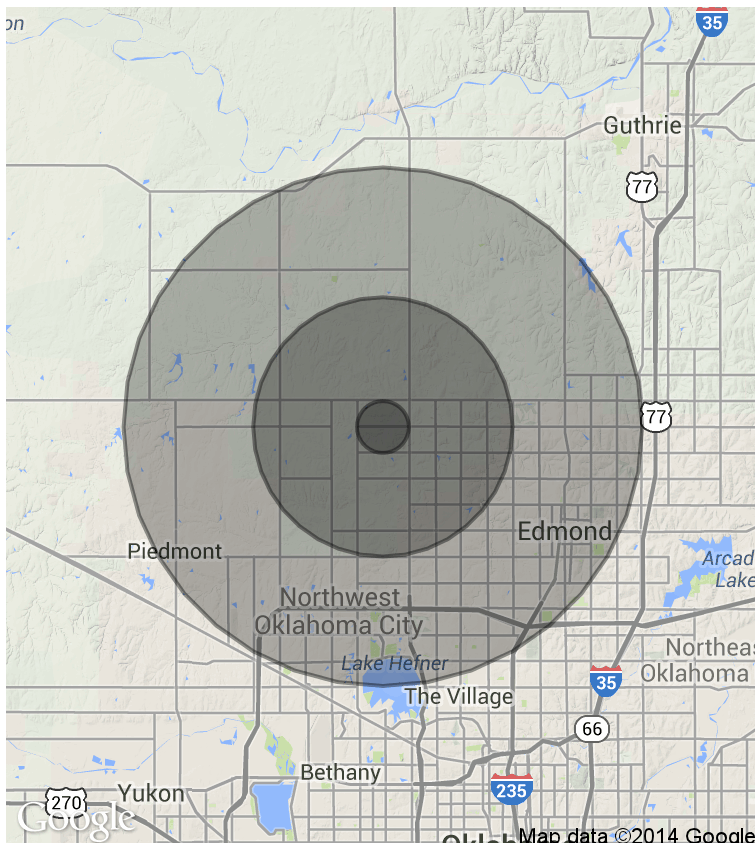
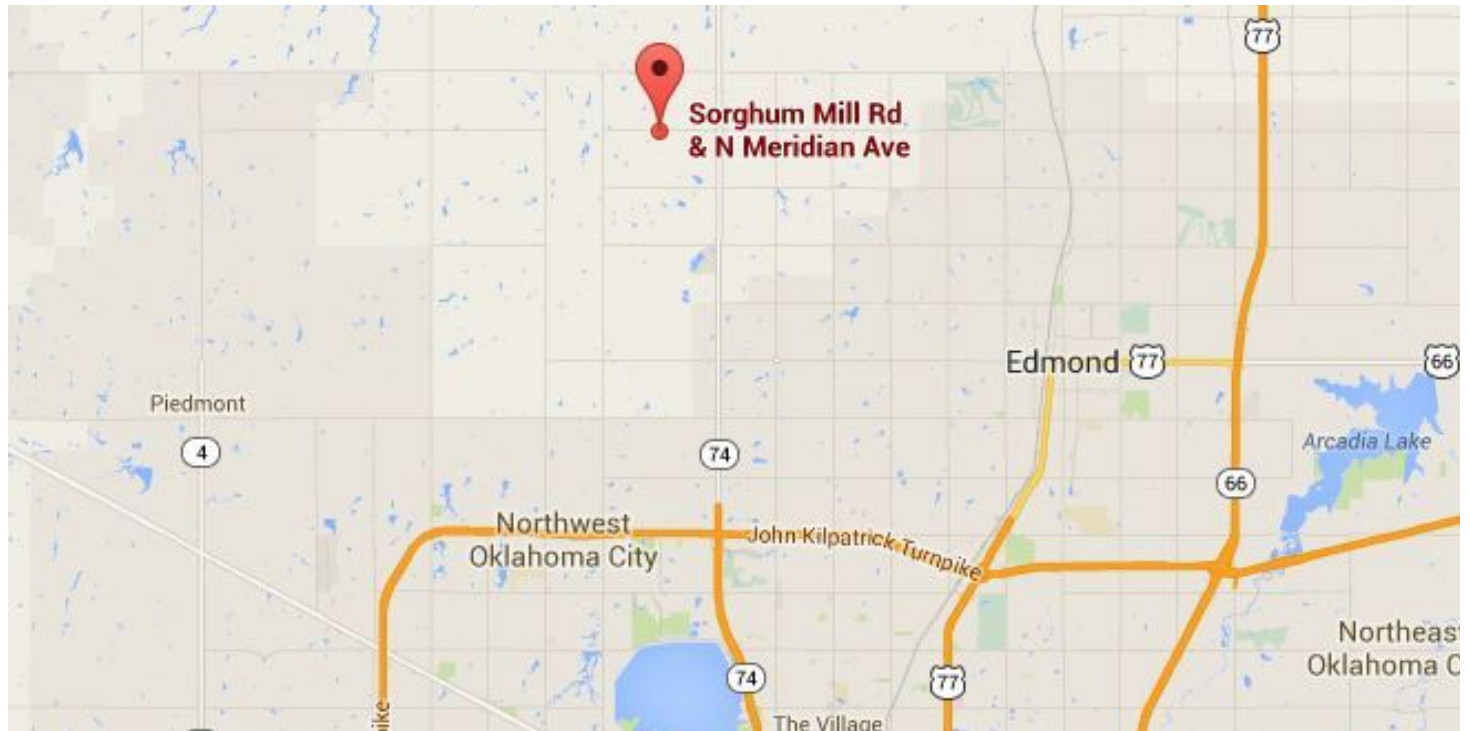
SW 1/4 of Section 2, T14N, R4W. The site contains 161.19 acres on the NE corner of N. Meridian and Sorghum Mill Road. the site has 1/2 mile frontage on each road.

FOR MORE INFORMATION, CONTACT

**Cordell C. Brown, CCIM, CIPS**  
cbrown@pricedwards.com  
405.239.1222  
210 Park Ave, Suite 1000  
Oklahoma City, OK 73102  
www.pricedwards.com

# LAND FOR SALE - 161 ACRES

NE corner of N. Meridian and Sorghum Mill Road Edmond, OK 73025



## DEMOGRAPHICS (per 2010 Census; 10 Miles Radius)

Total Population	181,583
Population Density	181,583
Median Age	36.3
Median Age (Male)	35.2
Median Age (Female)	37.2
Total Households	72,876
# of Persons Per HH	2.5
Average HH Income	\$89,743
Average House Value	\$215,965

The information above has been obtained from sources believed reliable. While we do not doubt its accuracy, we have not verified it and make no guarantee, warranty, or representation about it. You and your legal and technical advisors should conduct a careful, independent investigation of the property to determine to your satisfaction the suitability of the property for your needs.