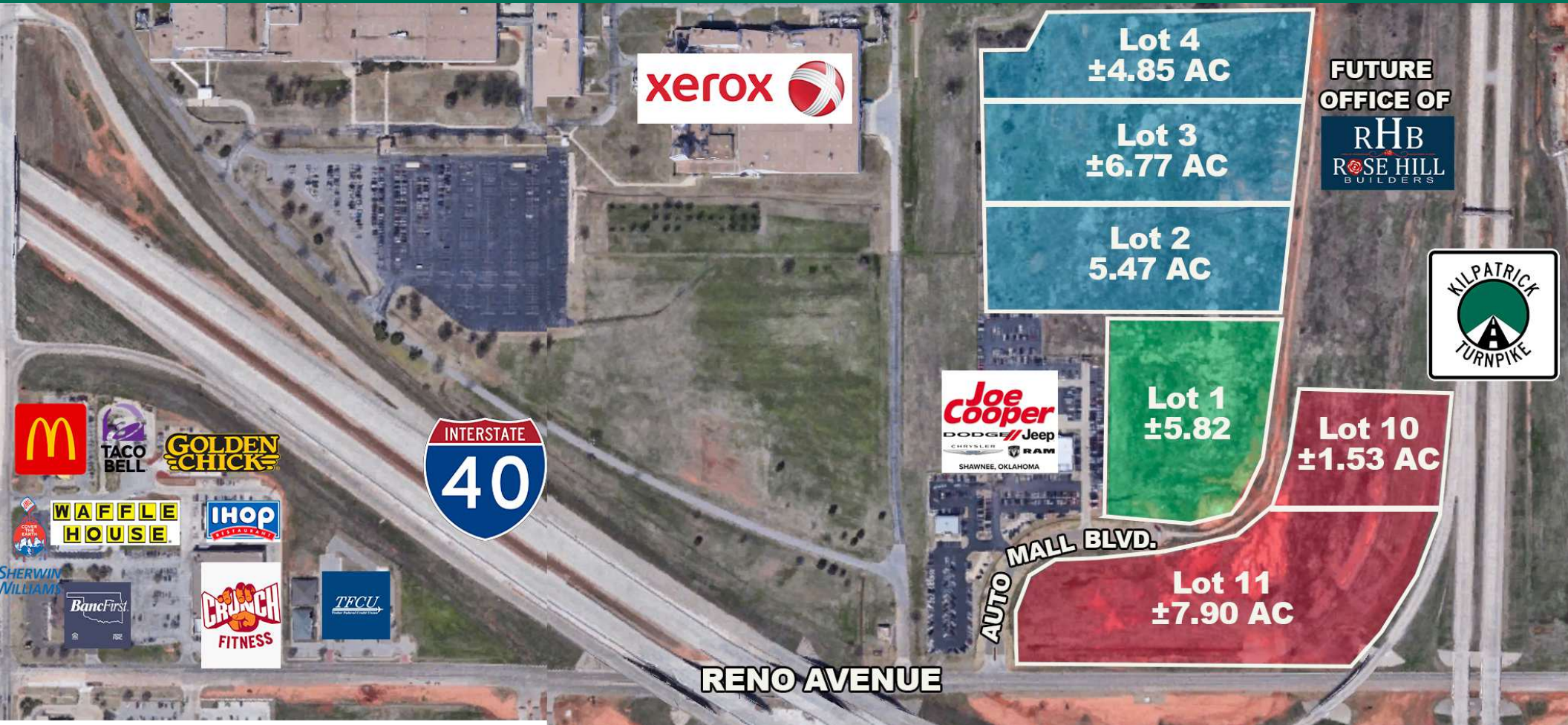


RENO AVENUE AND JOHN KILPATRICK TURNPIKE LAND

YUKON, OK 73099



**MONICA WITROCK**

[mwitrock@priceedwards.com](mailto:mwitrock@priceedwards.com)

O: 405.843.7474

## RENO AVENUE AND JOHN KILPATRICK TURNPIKE LAND

YUKON, OK 73099



### PROPERTY DETAILS

Sale Price:	\$5.00 - \$12.00 / SF
Total Acres:	±37 AC
Lot 1:	±5.82 AC
Lot 2:	±5.47 AC
Lot 3:	±6.77 AC
Lot 4:	±4.85 AC
Lot 10:	±1.53 AC
Lot 11:	±7.90 AC

**MONICA WITTRICK**

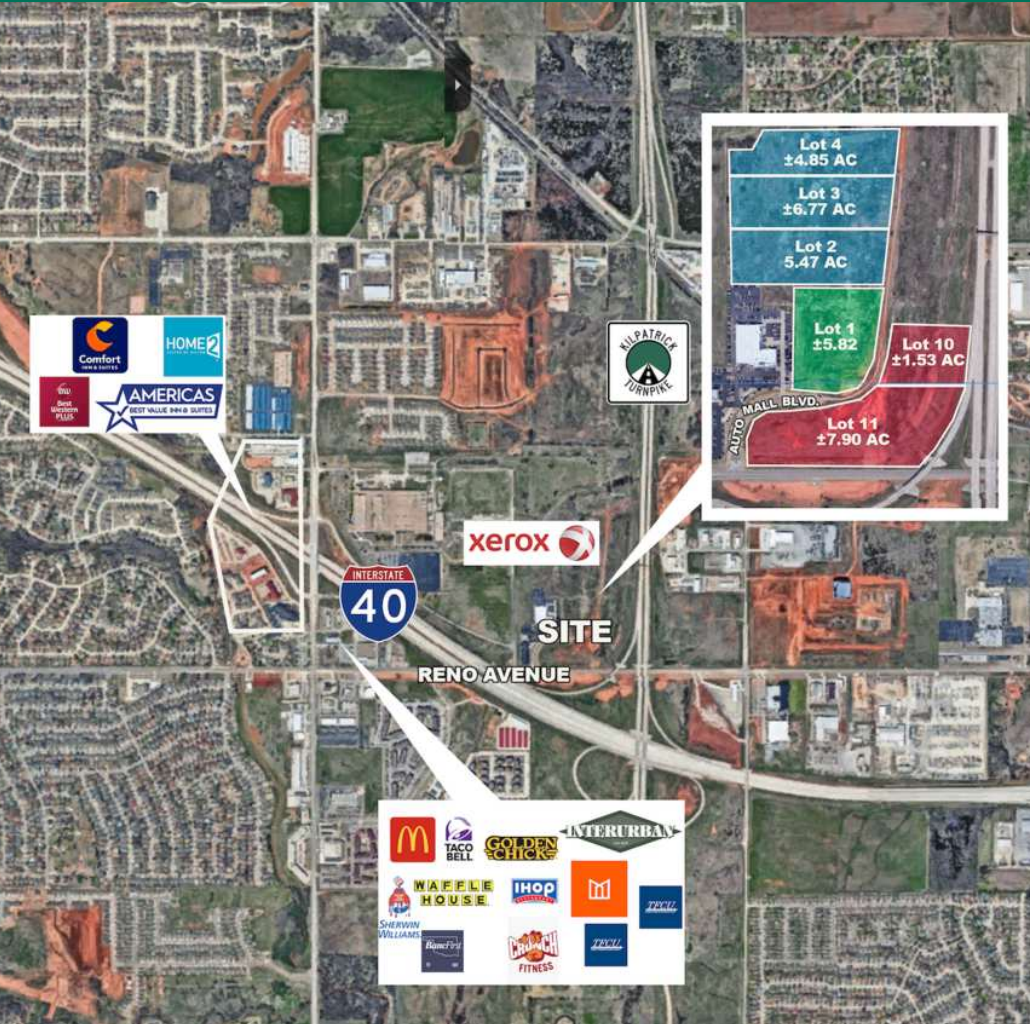
[mwittrick@pricedwards.com](mailto:mwittrick@pricedwards.com)

O: 405.843.7474



## RENO AVENUE AND JOHN KILPATRICK TURNPIKE LAND

YUKON, OK 73099



### PROPERTY DESCRIPTION

- Utilities to site
- Development ready site
- Detention pond existing
- Frontage on turnpike
- Great opportunity for innovation district, healthcare, industrial

### LOCATION DESCRIPTION

Easily accessible by I-40 and the John Kilpatrick Turnpike

### TRAFFIC COUNTS

### CARS / DAY

I-40	64,506
Reno Avenue	17,358
Kilpatrick Turnpike	20,107

### DEMOGRAPHICS

### 1 MILE

### 3 MILE

### 5 MILE

Population	5,183	61,548	111,079
Avg. Household Income	\$82,142	\$86,139	\$84,078
Total Households	1,9	22,985	42,453

### MONICA WITROCK

mwitrock@priceedwards.com

O: 405.843.7474



RENO AVENUE AND JOHN KILPATRICK TURNPIKE LAND

YUKON, OK 73099



**MONICA WITROCK**

[mwitrock@priceedwards.com](mailto:mwitrock@priceedwards.com)

O: 405.843.7474