

LAND SPACE NOW AVAILABLE

Sale Price:	\$18,000 / acre
Lot Size:	147.13 Acres
APN #:	R257111010
Zoning:	Agricultural
Market:	Oklahoma City (Deer Creek)
Sub Market:	Edmond
Cross Streets:	Sorghum Mill Road and Portland (Hwy 74)

PROPERTY OVERVIEW

147.128 acres located at the SW corner of Sorghum Mill Road and State Hwy 74 (Portland). Approximately 7.5 acres of land on the corner is not included in the parcel. The site is ideally suited residential and future commercial development. Deer Creek Schools are rapidly developing in the area. Sale does not include mineral rights.

LOCATION OVERVIEW

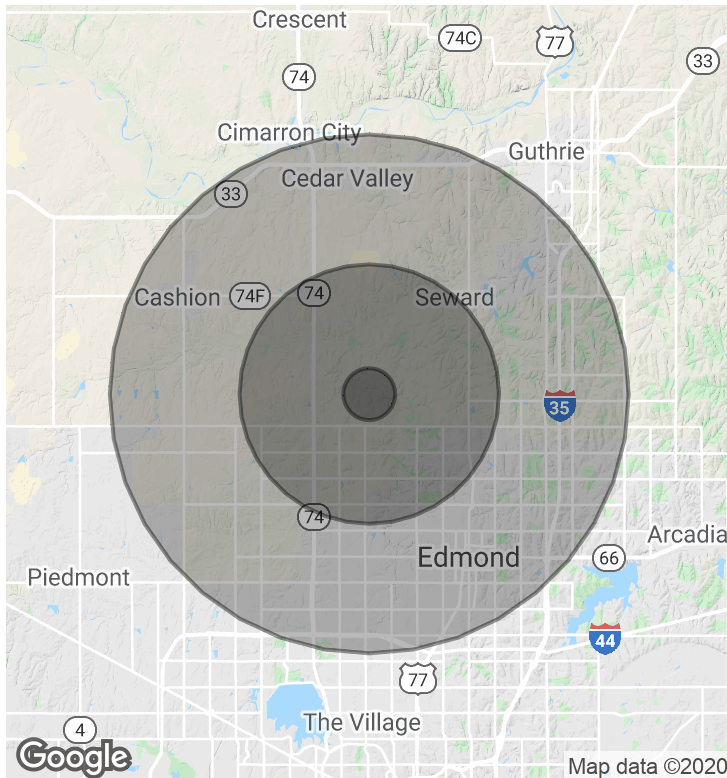
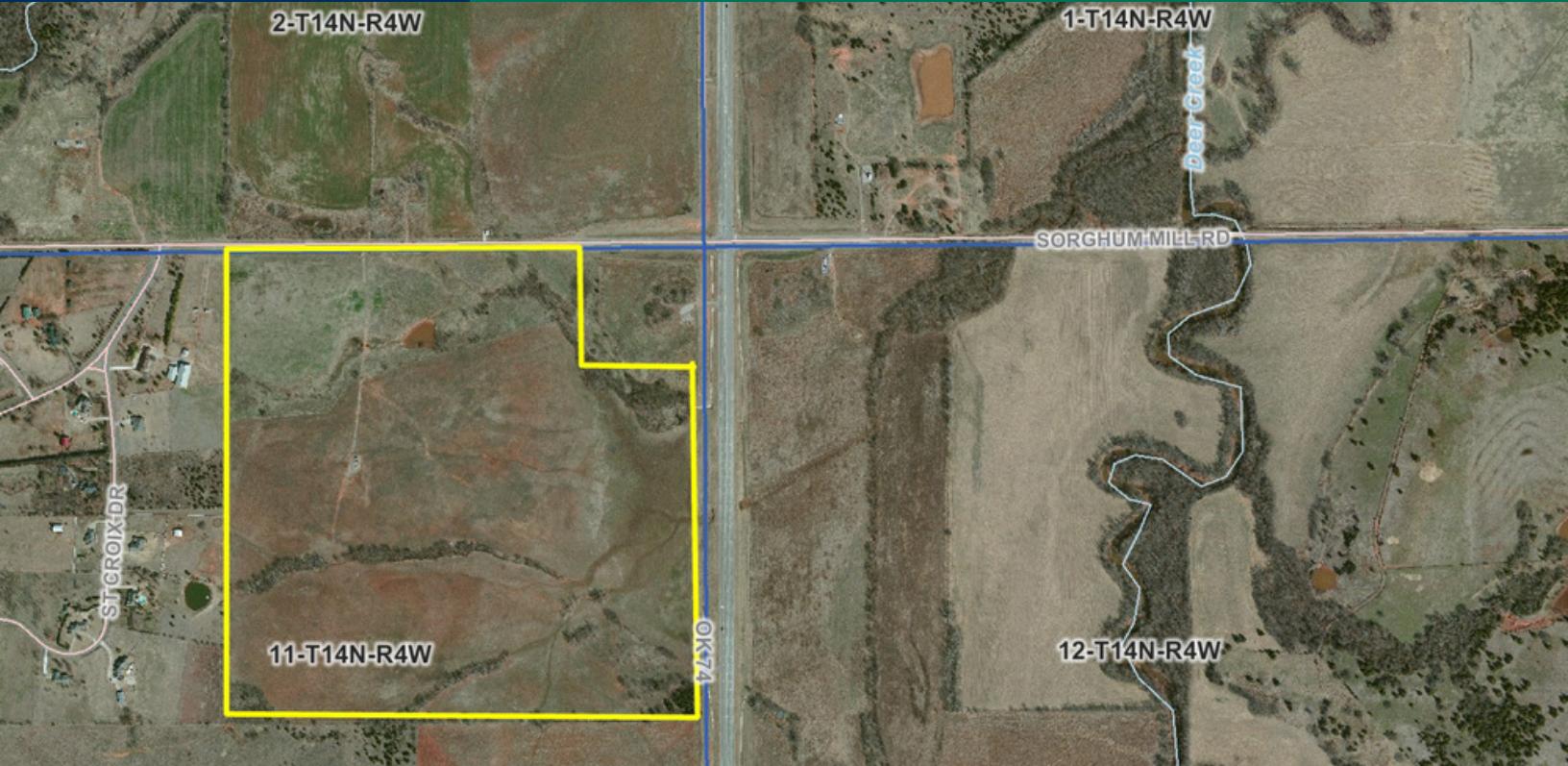
The site has almost 2,000 feet of frontage on Portland and 2,000 feet on Sorghum Mill Road. The intersection is signalized and Portland is 4 lanes..

CORDELL C. BROWN, CCIM, CIPS

405.239.1222

cbrown@priceedwards.com

The information above has been obtained from sources believe reliable. While we do not doubt its accuracy, we have not verified it and make no guarantee, warranty, or representation about it. You and your legal and technical advisors should conduct a careful, independent investigation of the property to determine to your satisfaction to the suitability of the property for your needs.



DEMOGRAPHICS (PER 2010 CENSUS; 5 MILES RADIUS)

Total Population	152,055
Population Density	152,055
Median Age	34.7
Median Age (Male)	33.7
Median Age (Female)	35.7
Total Households	57,794
# of Persons Per HH	2.6
Average HH Income	\$94,149
Average House Value	\$238,006

CORDELL C. BROWN, CCIM, CIPS

405.239.1222

cbrown@priceedwards.com

The information above has been obtained from sources believe reliable. While we do not doubt its accuracy, we have not verified it and make no guarantee, warranty, or representation about it. You and your legal and technical advisors should conduct a careful, independent investigation of the property to determine to your satisfaction to the suitability of the property for your needs.