

Self-Storage Facility - For Sale

1513 S Czech Hall Rd, Yukon, OK 73099



SELF-STORAGE FACILITY | FOR SALE

Sale Price:	\$2,200,000
Lot Size:	14.55 Acres
Total Units Size:	47,600 SF
Year Built:	2019
Zoning:	C-3
Market:	Oklahoma
Sub Market:	Yukon
Cross Streets:	SW 15th & Czech Hall Rd

COMMENTS

Exceptional opportunity to acquire this recently constructed self-storage facility. Located at SW 15th and Czech Hall Rd in Yukon, the property is surrounded by numerous residential developments and is just west of I-40 and the Kilpatrick Turnpike.

Subject property has room for storage unit expansion as well as pad sites available for development along Czech Hall Rd as well as SW 15th.

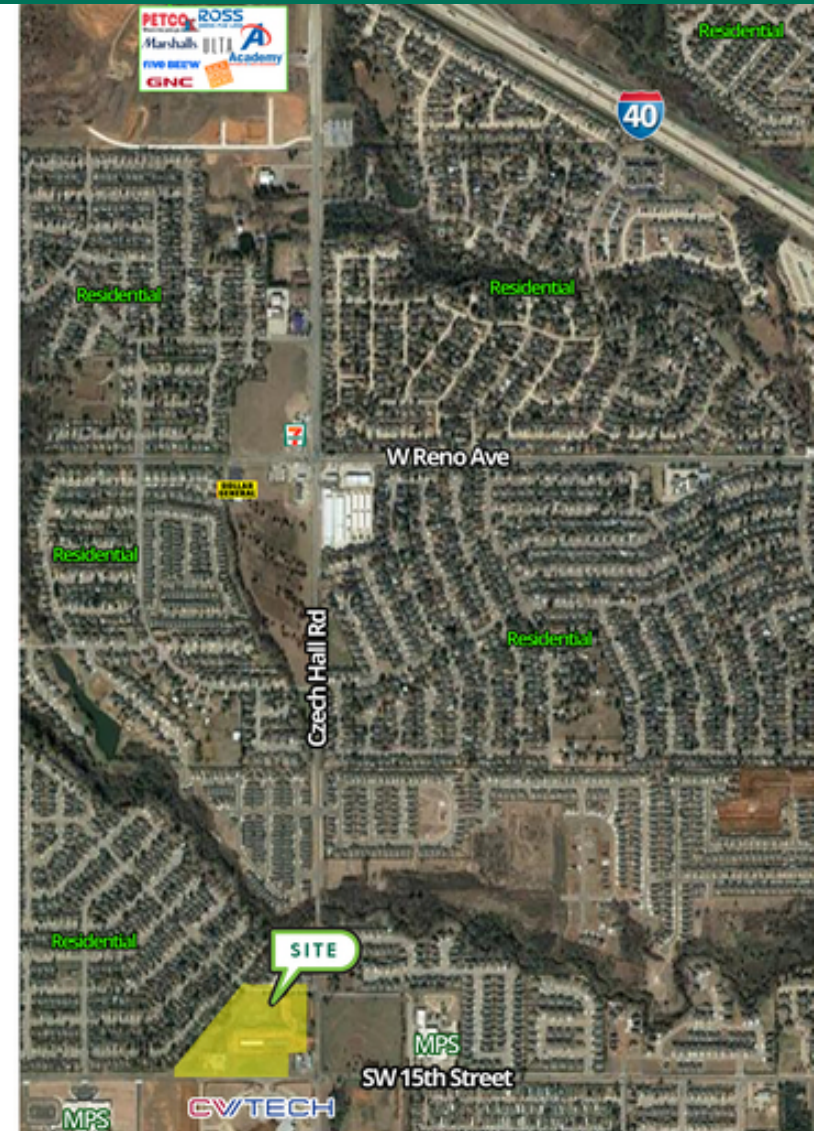
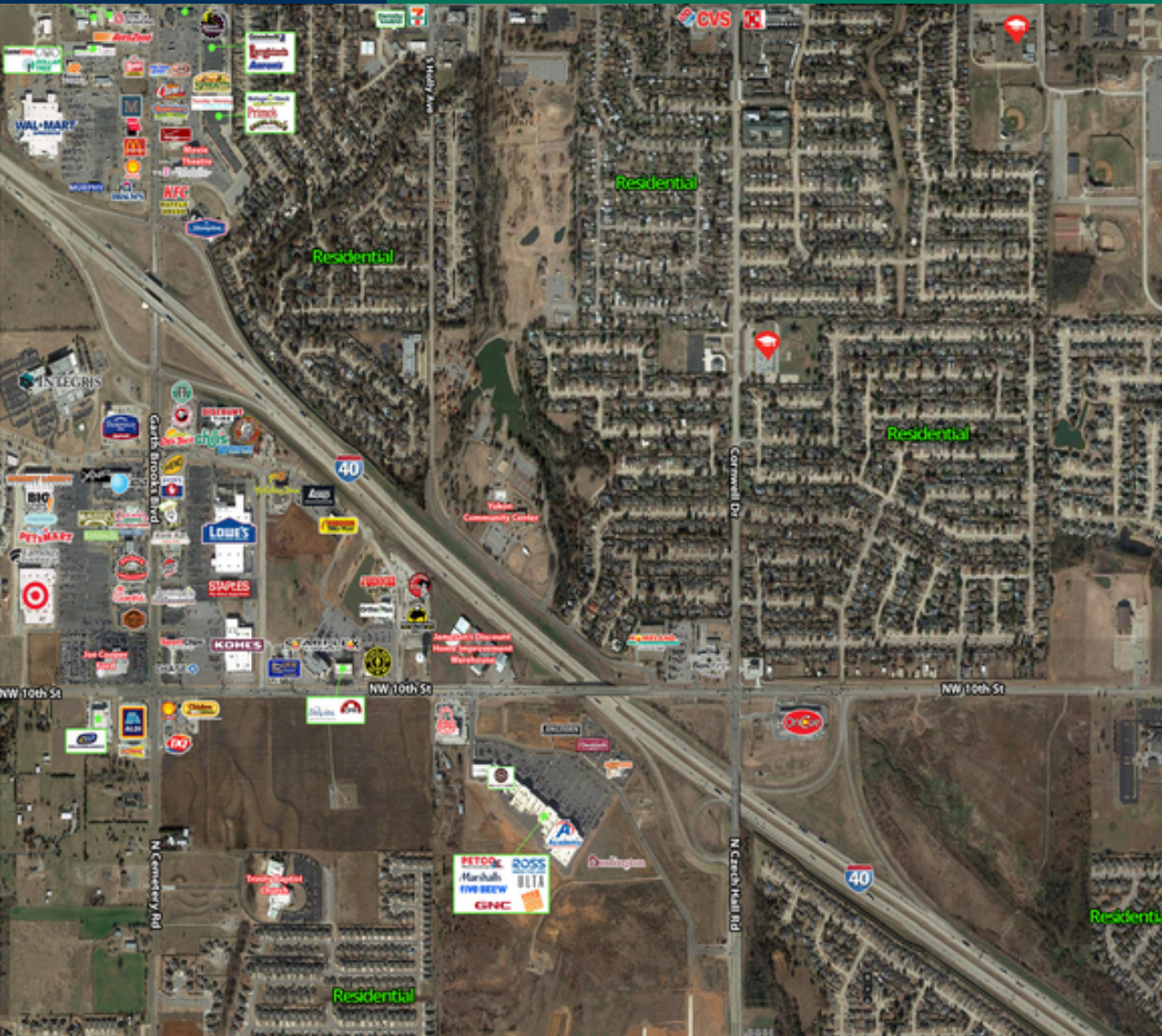
5 x 10 (56) units	10 x 10 (36) units	10 x 15 (34) units
10 x 20 (55) units	10 x 30 (17) units	
10 x 28 (40) outside units	10 x 40 (20) outside units	
10 x 30 (1) Roll Up Entry Doors	10 x 40 (1) Roll Up Entry Doors	

GEORGE WILLIAMS, CCIM
405.239.1270
gwilliams@pricedwards.com
pricedwards.com

PAUL RAVENCRAFT
405.239.1220
pravencraft@pricedwards.com
pricedwards.com

Self-Storage Facility - For Sale

1513 S Czech Hall Rd, Yukon, OK 73099



GEORGE WILLIAMS, CCIM
405.239.1270
gwilliams@pricedwards.com
pricedwards.com

PAUL RAVENCRAFT
405.239.1220
pravencraft@pricedwards.com
pricedwards.com

Self-Storage Facility - For Sale

1513 S Czech Hall Rd, Yukon, OK 73099

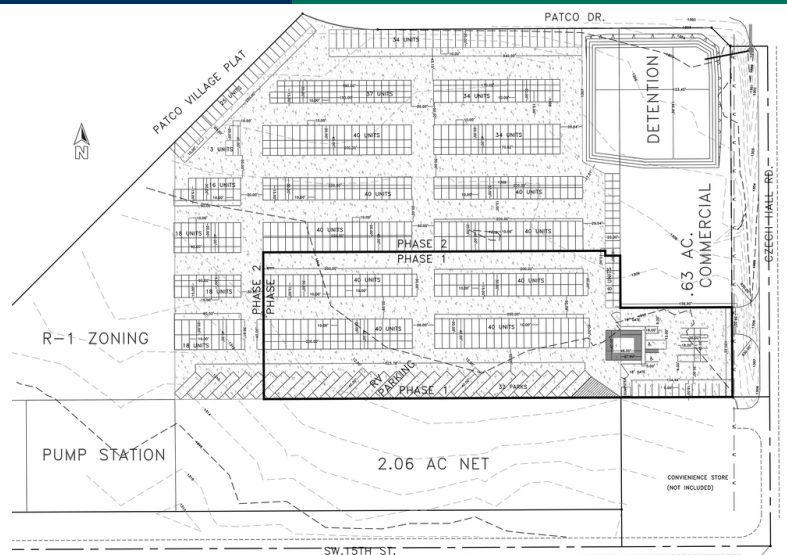


GEORGE WILLIAMS, CCIM
405.239.1270
gwilliams@pricedwards.com
pricedwards.com

PAUL RAVENCRAFT
405.239.1220
pravencraft@pricedwards.com
pricedwards.com

Self-Storage Facility - For Sale

1513 S Czech Hall Rd, Yukon, OK 73099



DEMOGRAPHICS (PER 2010 CENSUS; 5 MILES RADIUS)

Total Population	70,790
Population Density	70,790
Median Age	34.3
Median Age (Male)	34.1
Median Age (Female)	35.0
Total Households	26,323
# of Persons Per HH	2.7
Average HH Income	\$72,412
Average House Value	\$165,123

TRAFFIC COUNTS (PER ACOG)

S Czech Hall Rd	North	10,076
S Czech Hall Rd	South	5,619
SW 15th	East	8,052
SW 15th	West	3,334
		12082020

GEORGE WILLIAMS, CCIM
405.239.1270
gwilliams@pricedwards.com
pricedwards.com

PAUL RAVENCRAFT
405.239.1220
pravencraft@pricedwards.com
pricedwards.com