

HAFER PLAZA

1008 S. BRYANT, EDMOND, OK 73034



PROPERTY DESCRIPTION

- Windowed offices
- Work out facility with shower
- Onsite ownership
- Common break area
- Upscale restrooms
- Full service lease includes normal utilities, maintenance and janitorial
- Internet service included for an additional \$50 / month
- Free conference room

LOCATION DESCRIPTION

This beautiful Class A office building is situated in the heart of east Edmond on Bryant south of 9th Street. The building is adjacent to Hafer Park Trails and the Pelican Bay Aquatic Center. Convenient to numerous restaurants and shopping.

OFFERING SUMMARY

Suite 260:	±217 RSF \$640 / month with 3% annual increases
Building Class:	A
Year Built:	2018
Building Class:	A
Year Built:	2018

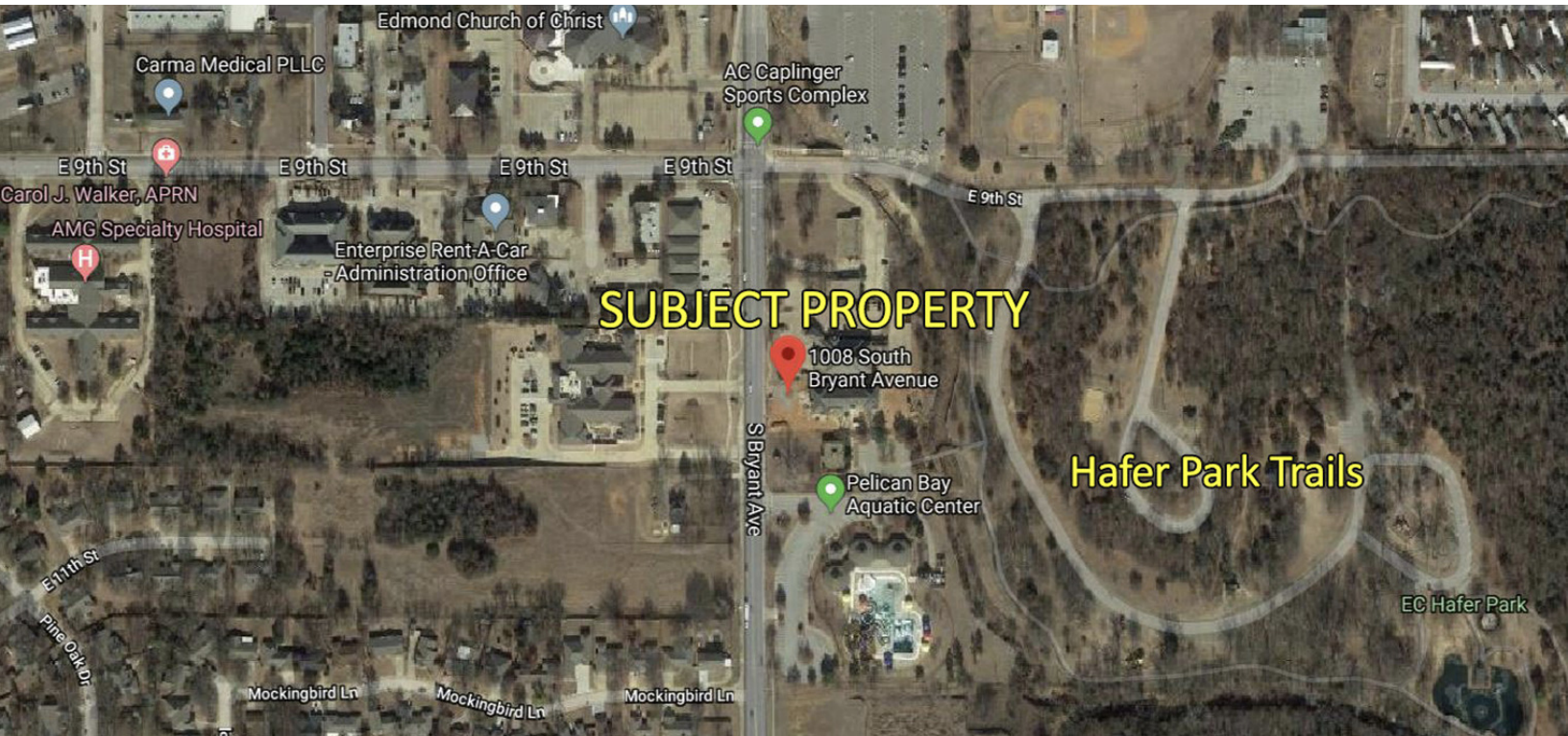
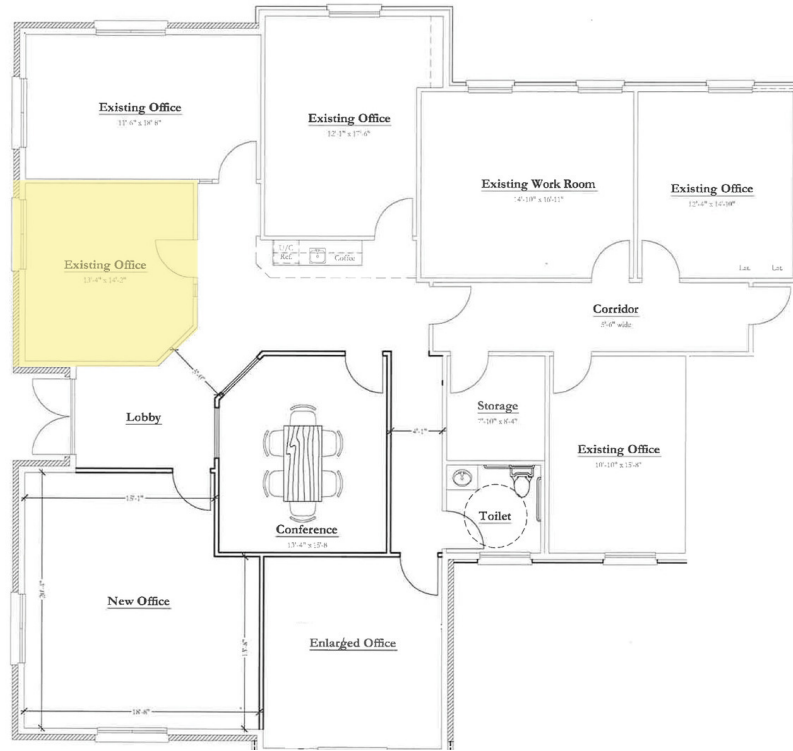
TOM FIELDS

tfields@priceedwards.com
O: 405.239.1205

HAFER PLAZA

1008 S. BRYANT, EDMOND, OK 73034

SUITE 260
±217 SF | \$640 / month



TOM FIELDS

tfields@priceedwards.com

O: 405.239.1205