

CLASS A OFFICE SPACE FOR LEASE

301 LILAC DRIVE, EDMOND, OK 73034



## LOCATION DESCRIPTION

Located in East Edmond; Lilac Drive is on the south side of E. 2nd Street which is located 3/4 of a mile west of I-35.

## PROPERTY HIGHLIGHTS

- Ample on-site parking
- Executive office space
- Class A office space
- Ready for Immediate Occupancy
- Locally owned and managed
- Includes normal utilities, janitorial & maintenance. Tenant pays internet/phone
- 3% annual increases

## OFFERING SUMMARY

<b>Suite 240:</b>	±1,075 RSF \$1,703 / month
-------------------	-------------------------------

<b>Class:</b>	A
---------------	---

### TOM FIELDS

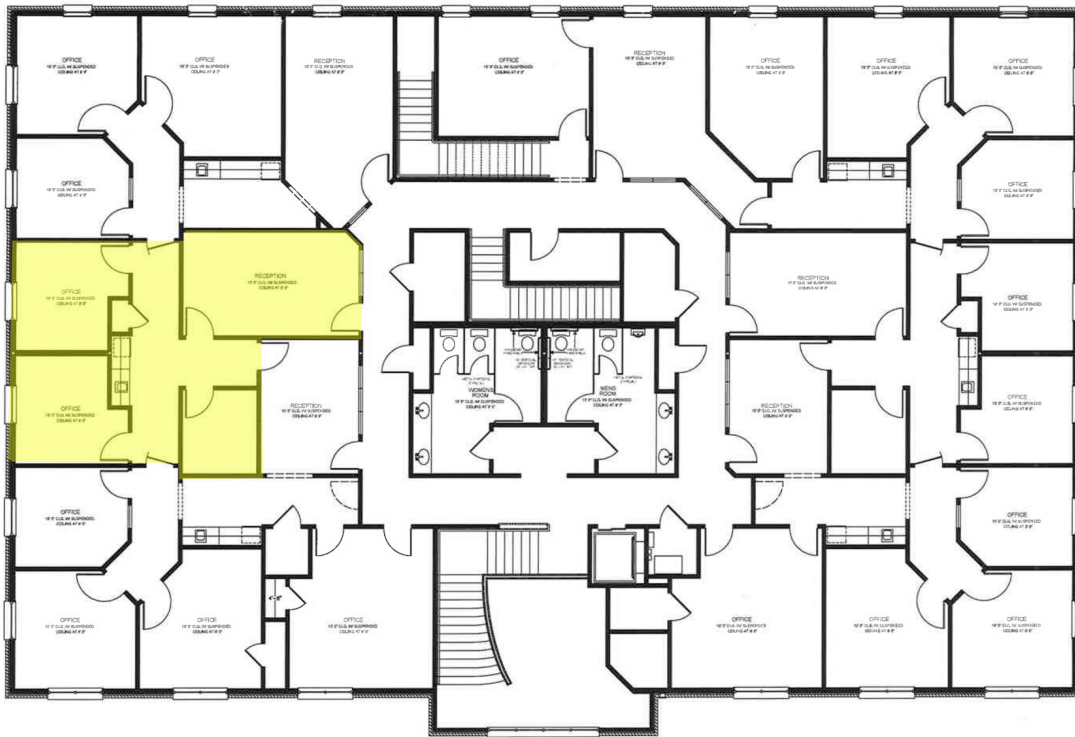
tfields@priceedwards.com

O: 405.239.1205

CLASS A OFFICE SPACE FOR LEASE

301 LILAC DRIVE, EDMOND, OK 73034

SUITE 240  
±1,075 RSF  
\$1,703 / MO



**TOM FIELDS**

tfields@priceedwards.com

O: 405.239.1205