

# Office Space For Lease

**FOR LEASE**

3509 French Park Drive, Edmond, OK 73034



## Details

<b>Suite A:</b>	850/RSF - \$1,330/month
<b>Suite B:</b>	625/RSF - \$975/month
<b>Combined Suite A &amp; B:</b>	1,475/RSF - \$2,300/month
<b>Increases:</b>	3% annual increases
<b>Class:</b>	B

## Overview

Located in East Edmond; French Park is on the south side of E. 2nd Street which is located 3/4 mile west of I-35.

## Highlights

- Includes normal utilities, janitorial & maintenance
- Suites have a wet bar
- Ample on-site parking
- Executive office space
- Locally owned and managed
- Tenant pays internet/phone
- Reception
- Coffee bar

**Tom Fields**

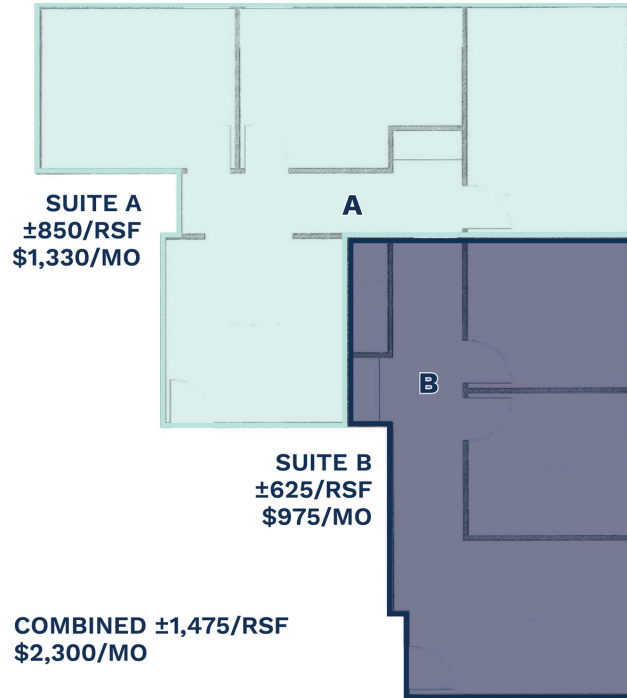
tfields@priceedwards.com  
405.239.1205

**PRICE  
EDWARDS**  
AND COMPANY

# Office Space For Lease

3509 French Park Drive, Edmond, OK 73034

## FOR LEASE



Tom Fields

tfields@priceedwards.com  
405.239.1205

**PRICE  
EDWARDS**  
AND COMPANY