



OFFICE SPACE NOW AVAILABLE

Available SF:	±5,976 RSF Floors 2-3 can be combined for ±19,300 RSF
Lease Rate:	Starting at \$18.50/RSF with 3% annual increases
Building Size:	78,308 SF
Building Class:	B
Building Profile:	Atrium Tower (north) is a 6-story building with a beautiful atrium allowing natural light throughout the entire building

PROPERTY OVERVIEW

AMENITIES:

- Ample free parking
- Atrium allows natural light to interior offices
- Numerous restaurants, banks & shopping nearby
- Upper floors offer view of Lake Hefner
- Superb visibility from Lake Hefner Parkway
- Traffic light provides easy ingress and egress
- Space includes like new furniture throughout for an additional cost
- Views of Lake Hefner

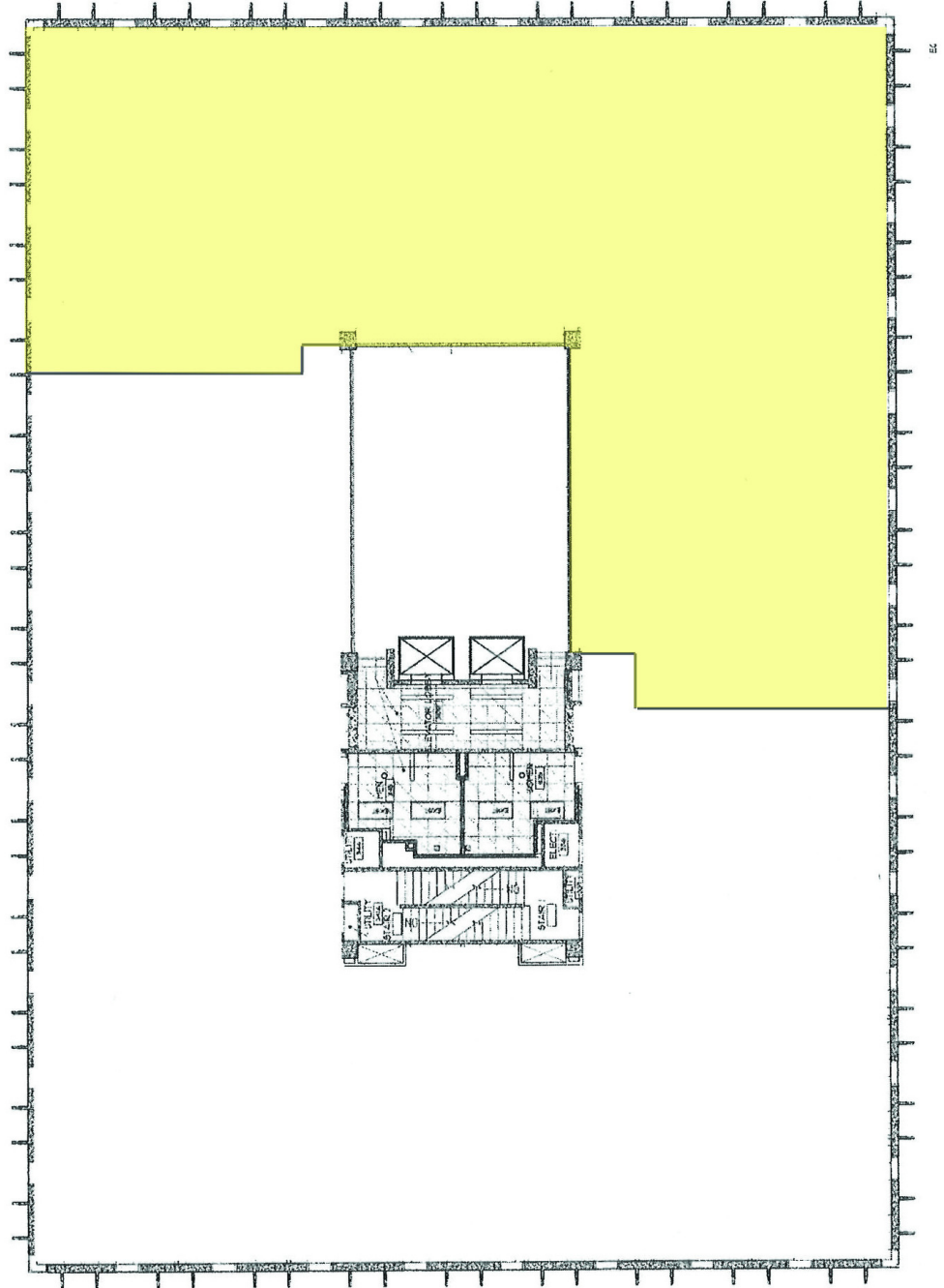
LOCATION OVERVIEW

Conveniently located at NW 63rd and Lake Hefner Parkway

TOM FIELDS
405.239.1205
tfields@priceedwards.com
priceedwards.com

CRAIG TUCKER
405.843.7474
ctucker@priceedwards.com
priceedwards.com

3rd Floor
±5,976 RSF



TOM FIELDS
405.239.1205
tfields@priceedwards.com
priceedwards.com

CRAIG TUCKER
405.843.7474
ctucker@priceedwards.com
priceedwards.com