



OFFERING SUMMARY

Lease Rate:	\$18.50 sf/yr with 3% annual increases
3rd Floor:	±5,976 RSF
Building Class:	B

PROPERTY OVERVIEW

Atrium Tower North is a 6-story building with a beautiful atrium allowing natural light throughout the entire building

LOCATION OVERVIEW

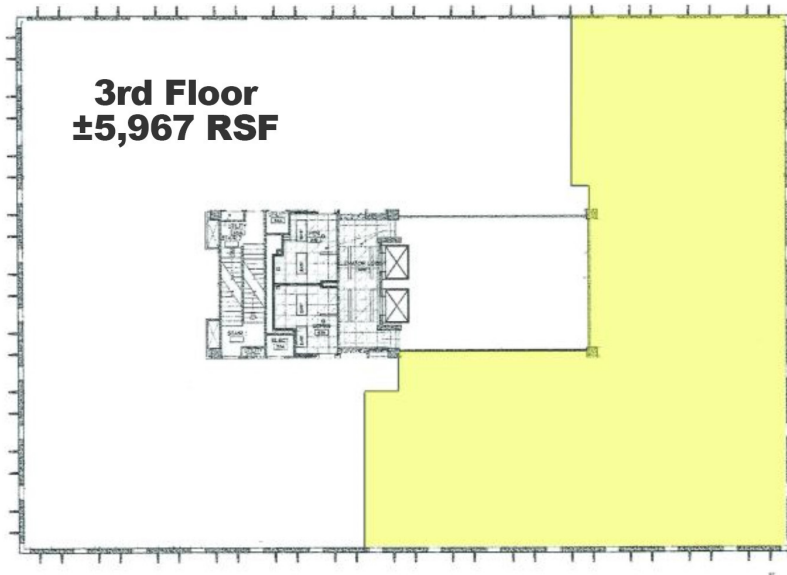
Conveniently located at NW 63rd and Lake Hefner Parkway.

PROPERTY HIGHLIGHTS

- Ample free parking
- Atrium allows natural light to interior offices
- Numerous restaurants, banks & shopping nearby
- Upper floors offer view of Lake Hefner
- Superb visibility from Lake Hefner Parkway
- Traffic light provides easy ingress and egress
- Space includes like new furniture throughout for an additional cost
- Views of Lake Hefner

TOM FIELDS
405.239.1205
tfields@priceedwards.com
priceedwards.com

CRAIG TUCKER
405.239.1202
ctucker@priceedwards.com
priceedwards.com



TOM FIELDS
405.239.1205
tfields@priceedwards.com
priceedwards.com

CRAIG TUCKER
405.239.1202
ctucker@priceedwards.com
priceedwards.com