



OFFERING SUMMARY

Suite 100:	±3,188 RSF
Suite 155:	±1,817 RSF
Suite 200:	±3,289 RSF
Suite 250:	±2,414 RSF
Suite 275:	±3,948 RSF
Suite 280:	±1,840 RSF

Lease Rate: \$21.00 SF/yr (Full Service)
with 3% annual increases

Building Size: 60,441 SF

Year Built: 2006

Market: Edmond

LOCATION OVERVIEW

Fisher Hall is well located in a tremendous area of growth in the popular suburb of Edmond, Oklahoma. The area is becoming increasingly popular with office users due to its proximity to upper and middle management personnel as well as its accessibility to Oklahoma City. Its location is well served from the east and west by the Kilpatrick Turnpike and Memorial Road and from the south by Eastern Avenue and Broadway Extension just one mile to the west.

PROPERTY HIGHLIGHTS

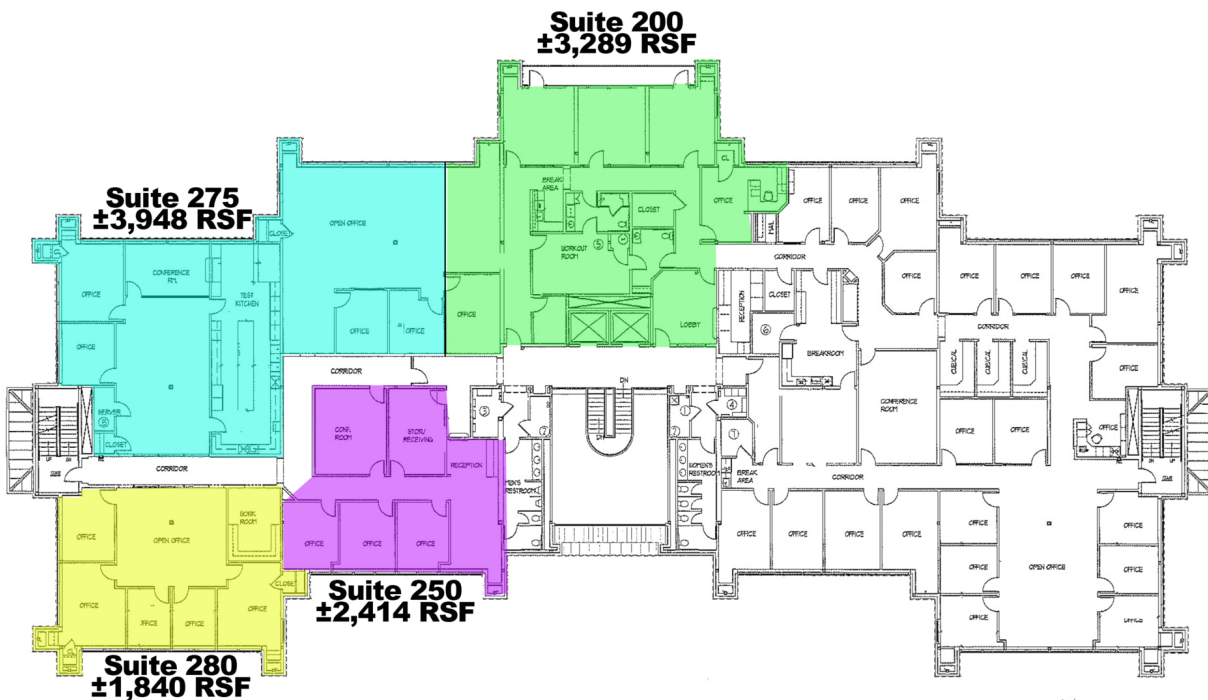
- Will divide
- Large conference room
- Overlooks a small lake
- Free on-site parking

TOM FIELDS
405.239.1205
tfields@priceedwards.com
priceedwards.com

CRAIG TUCKER
405.239.1202
ctucker@priceedwards.com
priceedwards.com



1ST FLOOR - OVERALL PLAN
ASB SCALE 1/4" = 1'-0"



← North

TOM FIELDS
405.239.1205
tfields@priceedwards.com
priceedwards.com

CRAIG TUCKER
405.239.1202
ctucker@priceedwards.com
priceedwards.com