

JAMESTOWN OFFICE PARK

3037 NW 63RD, OKLAHOMA CITY, OK 73116



PROPERTY DESCRIPTION

Variety of spaces available. The spaces feature a variety of flooring types, 2' X 4' grid ceilings, floor to ceiling glass and newly remodeled common restrooms and common hallways.

- Convenient location
- Drive-up free surface parking on all sides
- Professionally managed with on-site engineering

LOCATION DESCRIPTION

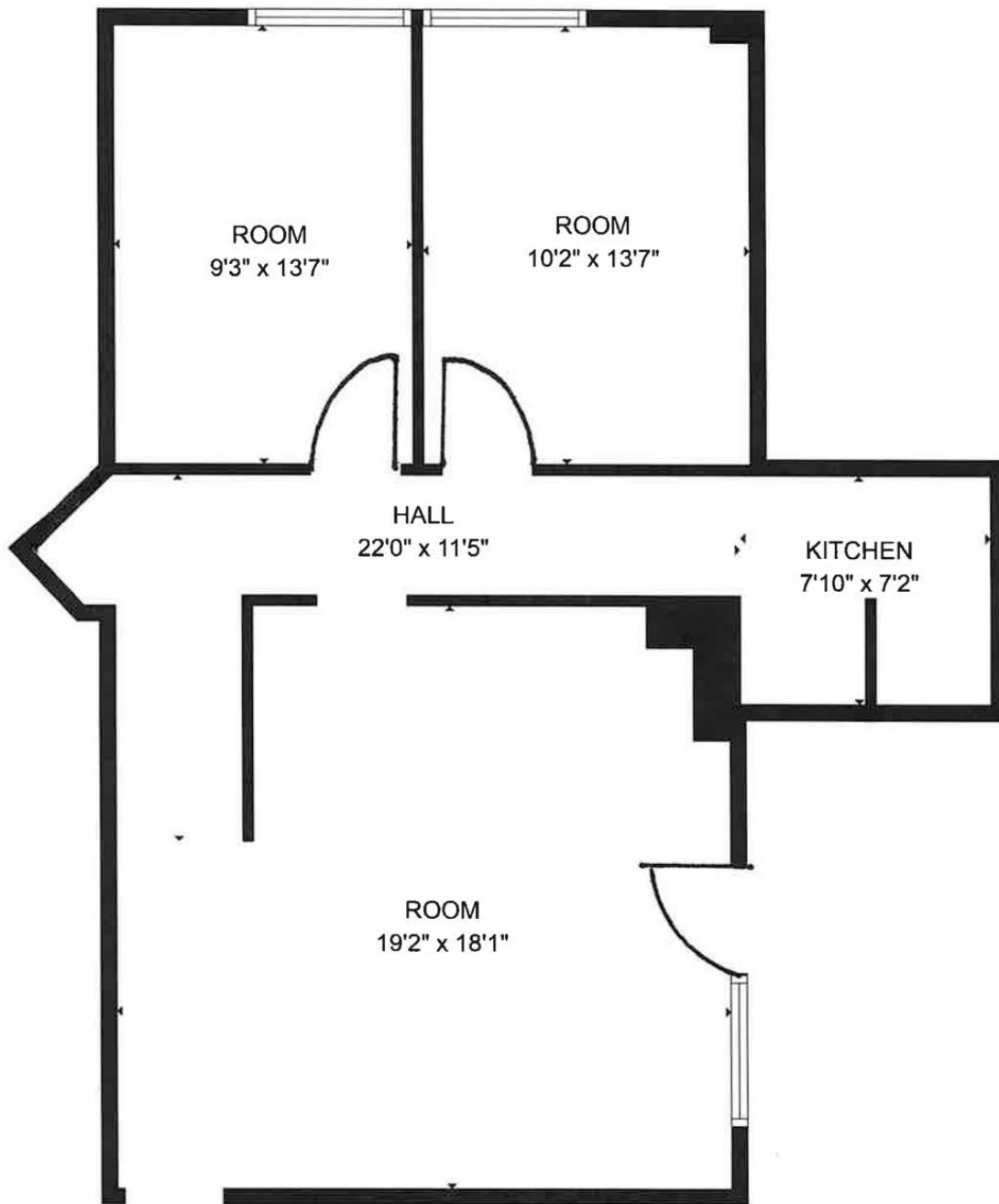
Nestled in the heart of the desirable Northwest quadrant, this value packed, three building complex delivers the ambiance of a suburban garden style property with the convenience of a larger, multi-tenant complex. Mature landscaping and multiple water features combined with floor to ceiling glass lines makes this building a serene and comfortable working environment.

OFFERING SUMMARY

Suite 204W:	838 RSF
Lease Rate:	\$15.00 SF/yr (Gross)
Building Size:	76,263 SF
Year Built / Renovated:	1980 / 2012
Market:	NW OKC
Cross Streets:	NW 63rd & N. May Avenue

C. DEREK JAMES

djames@priceedwards.com
O: 405.239.1206



C. DEREK JAMES

djames@priceedwards.com

O: 405.239.1206