

14101 & 14201 Wireless Way, Oklahoma City, OK 73134

OFFICE SPACE FOR LEASE



- Built as the corporate headquarters for a telecom company
- Highest quality materials and construction
- Large floorplates ranging from 16,000 SF to 22,000 SF
- State of the art building systems
- Excellent accessibility via the Lake Hefner Parkway, Memorial Road and the Kilpatrick Turnpike
- Proximity to restaurants and shopping
- Corporate office park environment
- Attractive architecture/design
- Balconies overlooking the park's lake
- 4.81 per 1,000 SF parking ratio (free surface parking)
- Back-up generator provides capacity to run both buildings indefinitely



Craig Tucker
405.239.1202
ctucker@priceedwards.com

Tom Fields
405.239.1205
tfields@priceedwards.com

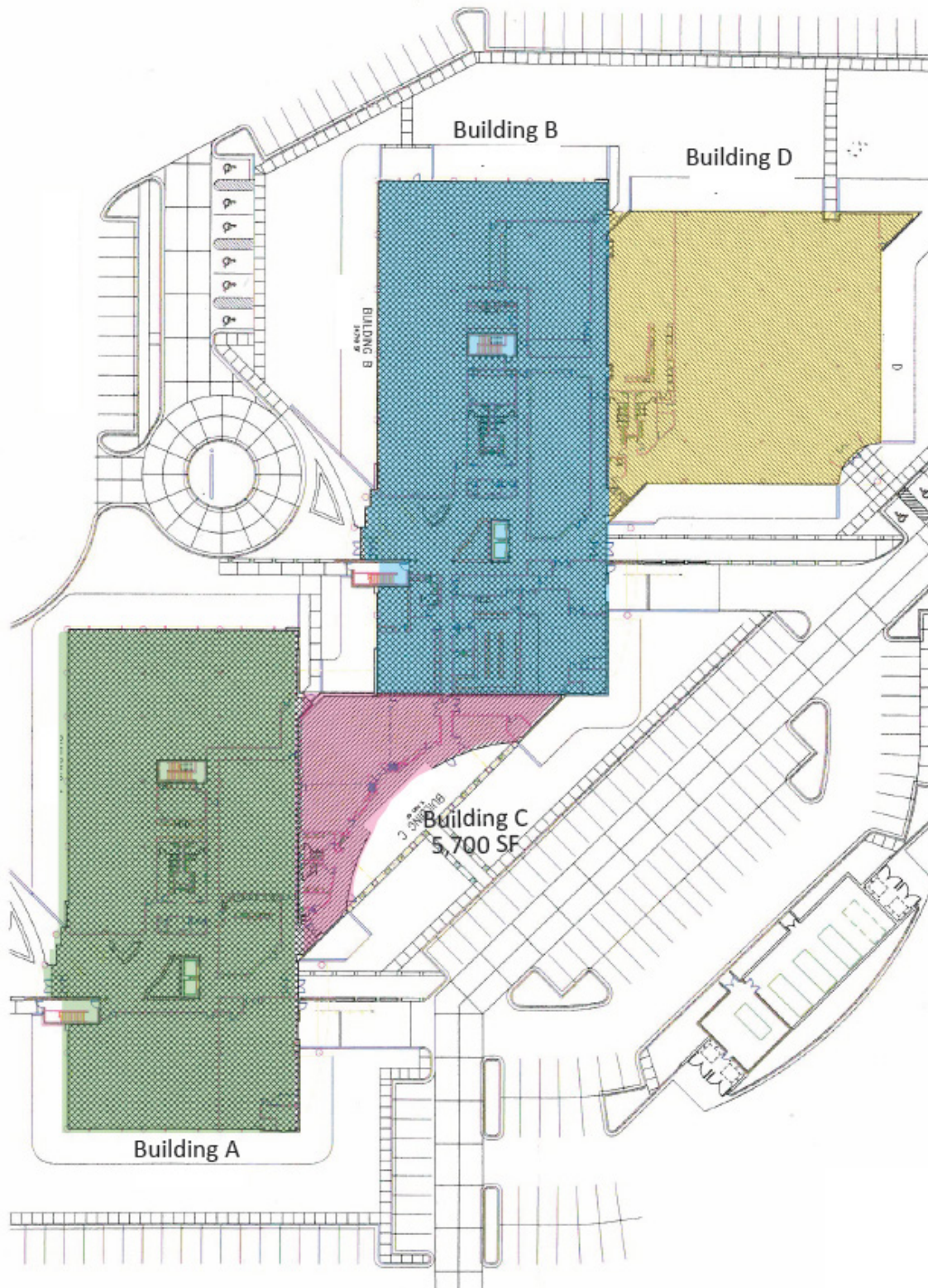
Price Edwards & Company | 210 Park Avenue, Suite 700, Oklahoma City, OK 73102 | Phone (405) 843-7474 | Fax (405) 236-1849 | www.priceedwards.com

The information herein has been obtained from sources believed reliable. While we do not doubt its accuracy, we have not verified it and make no guarantee, warranty, or representation about it. You and your legal and technical advisors should conduct a careful, independent investigation of the property to determine to your satisfaction to the suitability of the property for your needs.

14101 & 14201 Wireless Way, Oklahoma City, OK 73134

PRICE
EDWARDS
AND COMPANY

OFFICE SPACE FOR LEASE

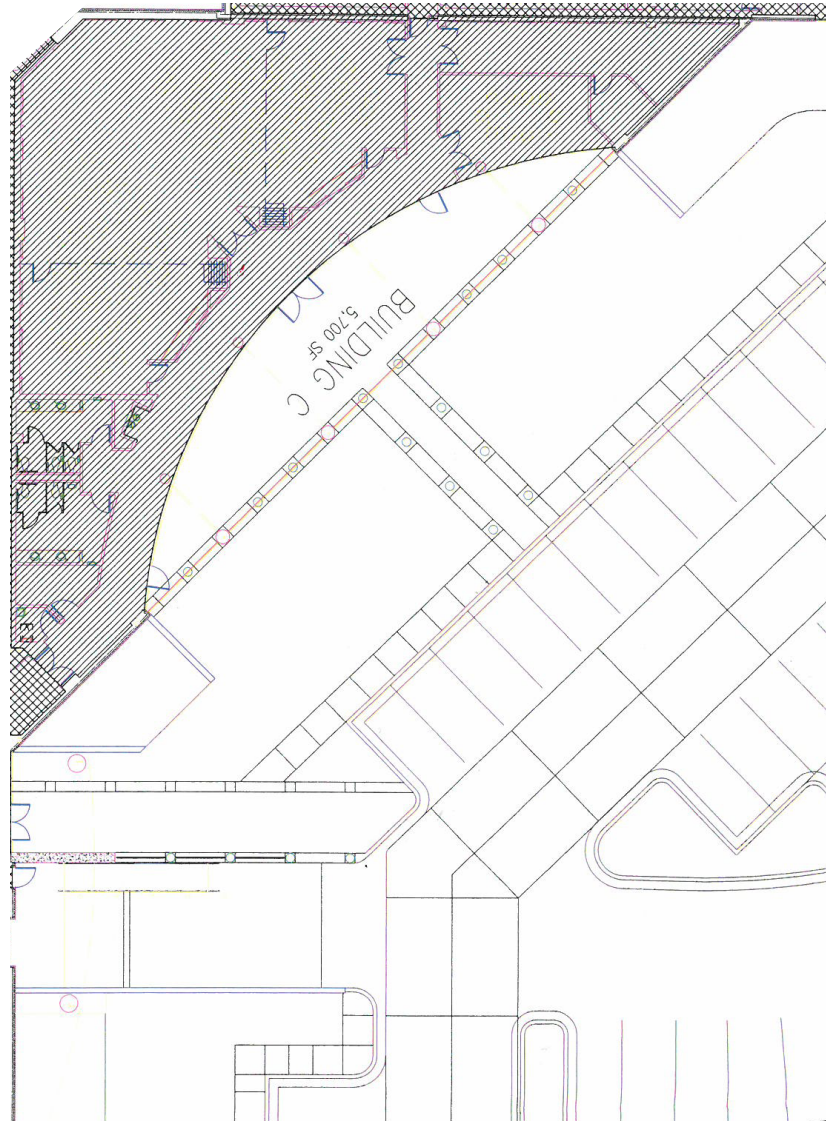


14101 & 14201 Wireless Way, Oklahoma City, OK 73134

PRICE
EDWARDS
AND COMPANY

OFFICE SPACE FOR LEASE

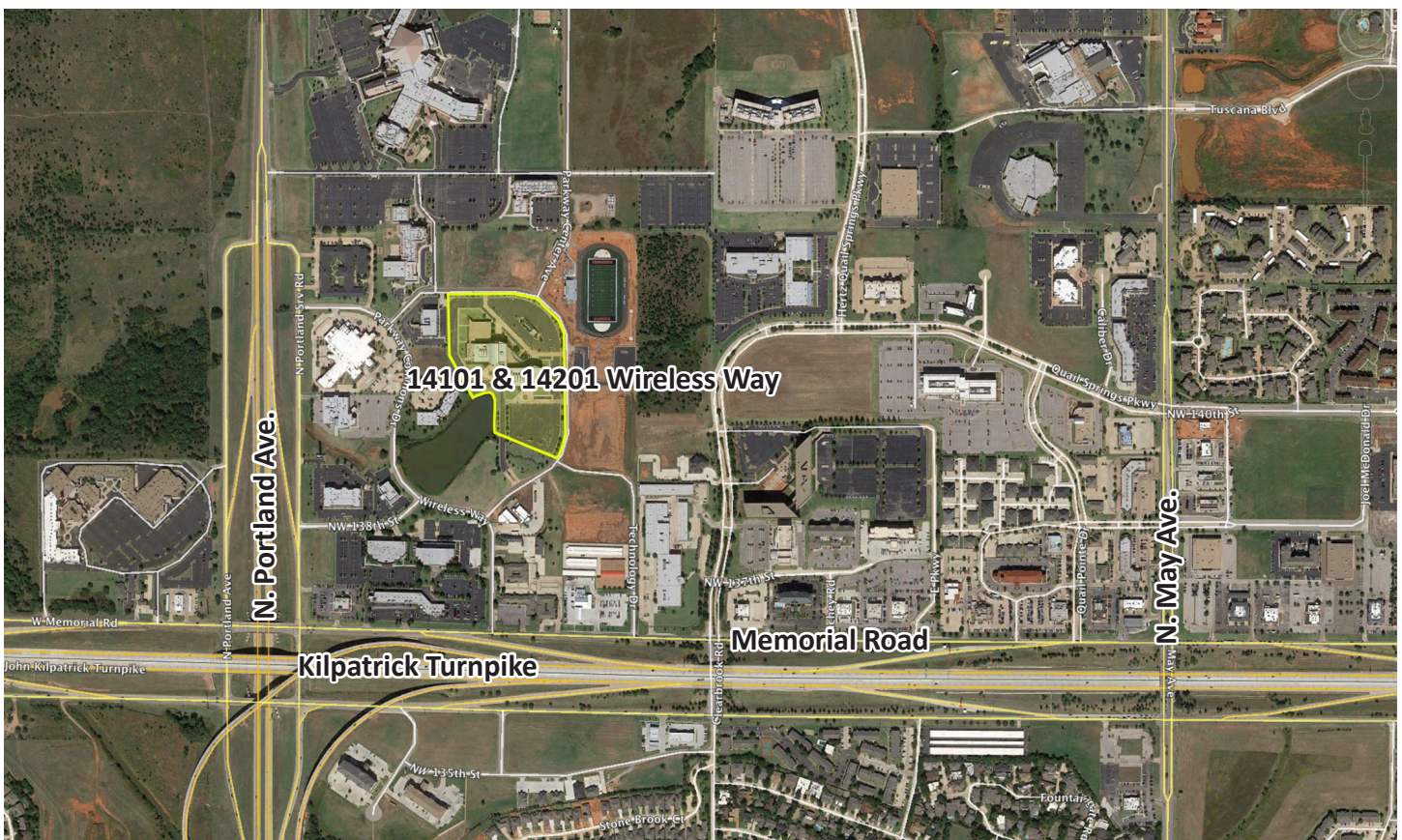
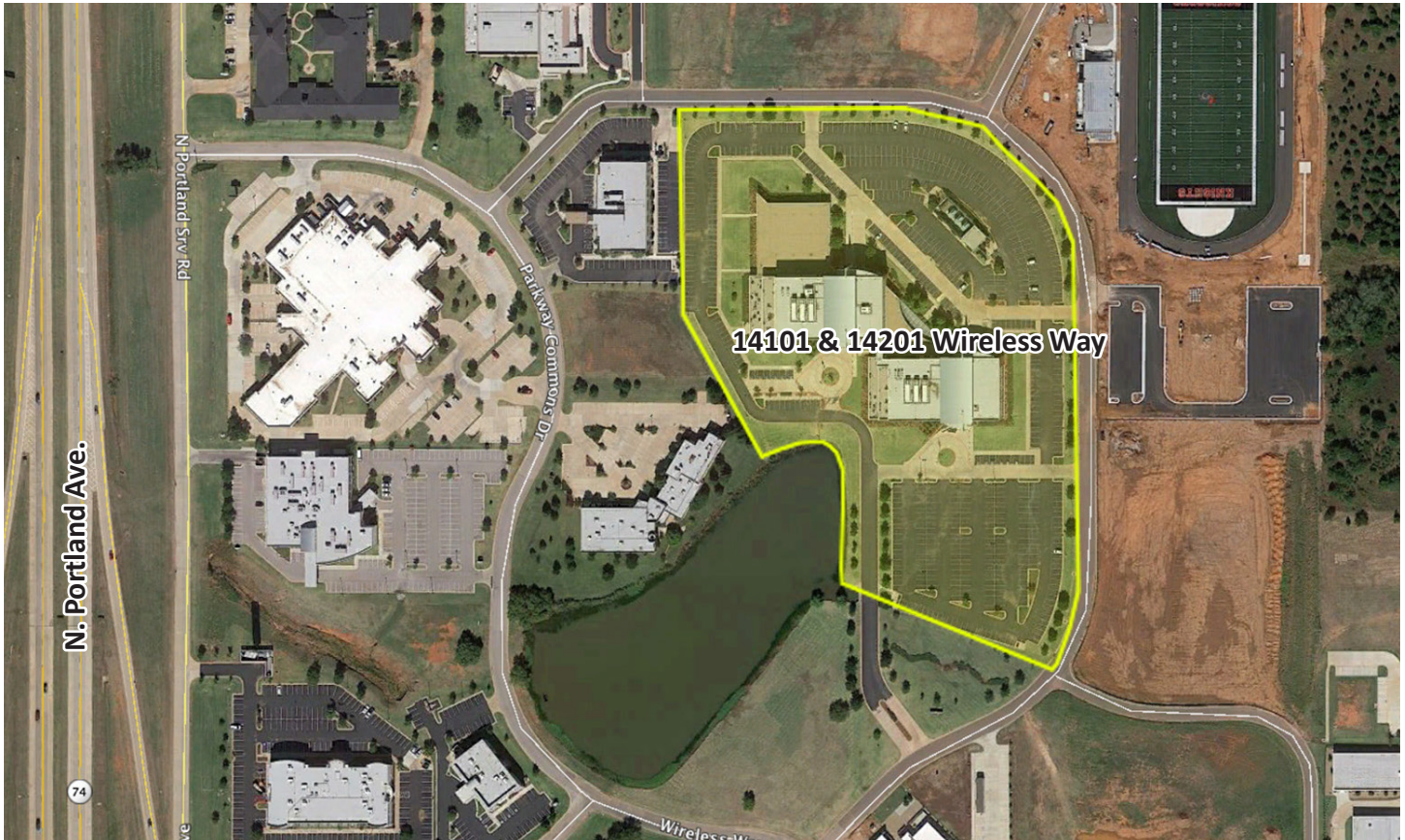
Building C
5,700 SF
Currently set up as a conference center



14101 & 14201 Wireless Way, Oklahoma City, OK 73134

PRICE
EDWARDS
AND COMPANY

OFFICE SPACE FOR LEASE



Price Edwards & Company | 210 Park Avenue, Suite 700, Oklahoma City, OK 73102 | Phone (405) 843-7474 | Fax (405) 236-1849 | www.pricedwards.com

The information herein has been obtained from sources believed reliable. While we do not doubt its accuracy, we have not verified it and make no guarantee, warranty, or representation about it. You and your legal and technical advisors should conduct a careful, independent investigation of the property to determine to your satisfaction to the suitability of the property for your needs.